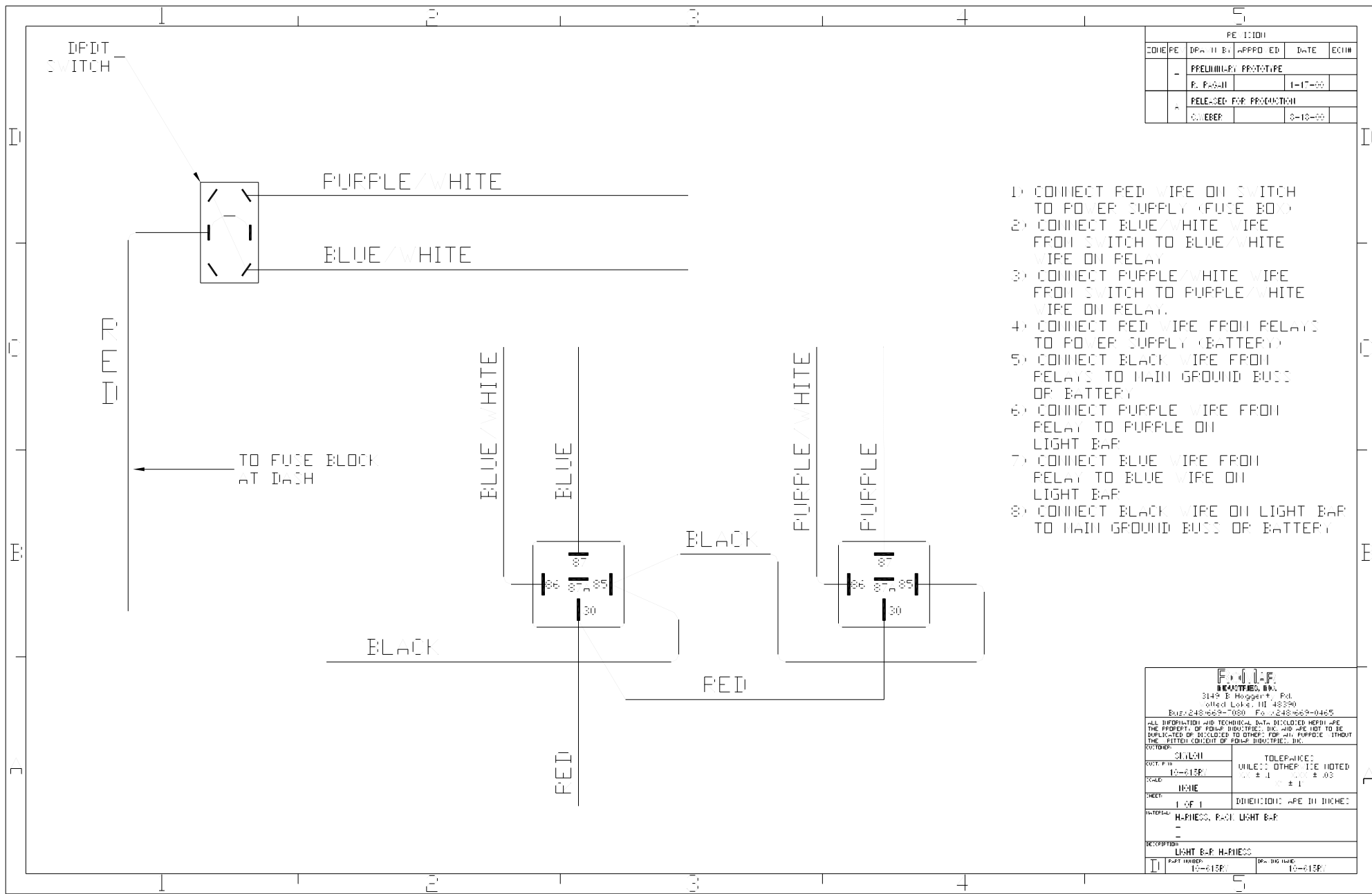


REVISION				
CODE	DESCRIPTION	APPROVED	DATE	EDITH
-	PRELIMINARY PROTOTYPE			
P.	DESIGN		1-17-66	
A	RELEASED FOR PRODUCTION			
	CHIEFER		6-18-66	



- 1) CONNECT RED WIRE ON SWITCH TO POWER SUPPLY (FUSE BOX)
- 2) CONNECT BLUE/WHITE WIRE FROM SWITCH TO BLUE/WHITE WIRE ON RELAY
- 3) CONNECT PURPLE/WHITE WIRE FROM SWITCH TO PURPLE/WHITE WIRE ON RELAY
- 4) CONNECT RED WIRE FROM RELAY TO POWER SUPPLY (BATTERY)
- 5) CONNECT BLACK WIRE FROM RELAY TO MAIN GROUND BUSS OF BATTERY
- 6) CONNECT PURPLE WIRE FROM RELAY TO PURPLE ON LIGHT BAR
- 7) CONNECT BLUE WIRE FROM RELAY TO BLUE WIRE ON LIGHT BAR
- 8) CONNECT BLACK WIRE ON LIGHT BAR TO MAIN GROUND BUSS OF BATTERY

FOLIP INDUSTRIES, INC.	
3149 E. Hoggett Rd. Lisle, Ill. 48340	
ELEC. 248-6629-7000 FAX 248-6629-0465	
ALL INFORMATION AND TECHNICAL DATA DISCLOSED HEREIN ARE THE PROPERTY OF FOLIP INDUSTRIES, INC. AND ARE NOT TO BE REPRODUCED OR DISCLOSED TO OTHERS FOR ANY PURPOSE WITHOUT THE WRITTEN CONSENT OF FOLIP INDUSTRIES, INC.	
QUANTITY	SIXTY
QUANTITY	UNLESS OTHERWISE NOTED
WAVE	± 1% ± .03
WAVE	± 1%
WAVE	DIMENSIONAL WAVE IN INCHES
MATERIAL	HARNESS, EXCL. LIGHT BAR
RECEPTION	LIGHT BAR HARNESS
II	PART NUMBER 10-615P(1) REV. BY DATE 10-615P(1)